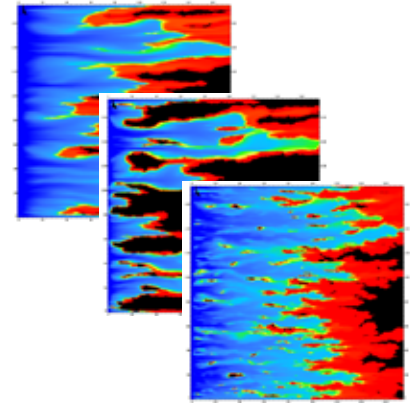
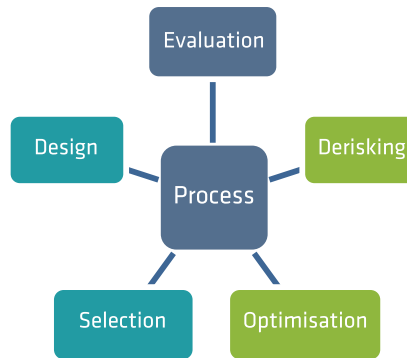
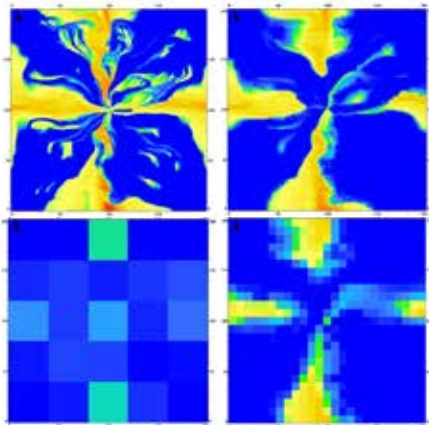


# Modelling/Simulation



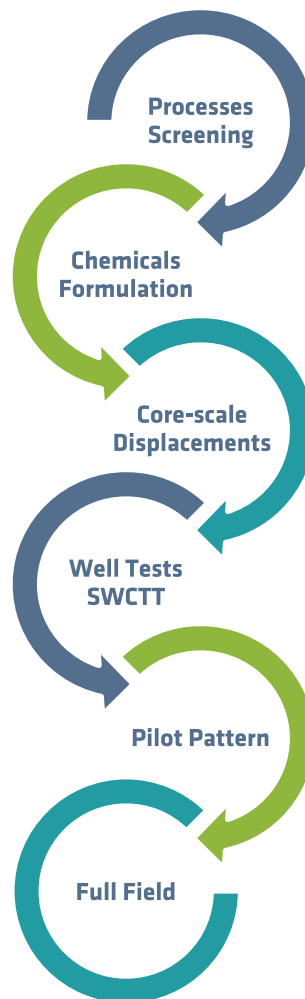
## Rock-Solid Workflow

- **Your reservoir type:**  
sandstone, carbonate, naturally fractured, HT / HS, tar sand, heavy oil
- **Step-by-step stages / scales:**  
core plug, near wellbore, interwell, pilot pattern, full field



## Addressed Challenges

- Comprehensive advanced EOR physics from core to field scale
- History matching & predictive forecast methodologies
- Injection strategy optimisation, adsorption & channeling mitigation
- Upscaling, rock typing scaling laws
- Process robustness evaluation, uncertainties management
- Technical and economic optimisation



## Tailored Processes

- Alkali / surfactant / polymer
- Adsorption inhibitors
- Foams, steam foams
- Wettability change
- Low salinity
- Fractured reservoirs
- Thermal methods

